

# genSpace: Exploring Social Networking Metaphors for Scientific Collaborative Work

Gail Kaiser, Swapneel Sheth, Chris Murphy - {gail, swapneel, cmurphy} @ cs.columbia.edu  
 Programming Systems Lab, Department of Computer Science, Columbia University

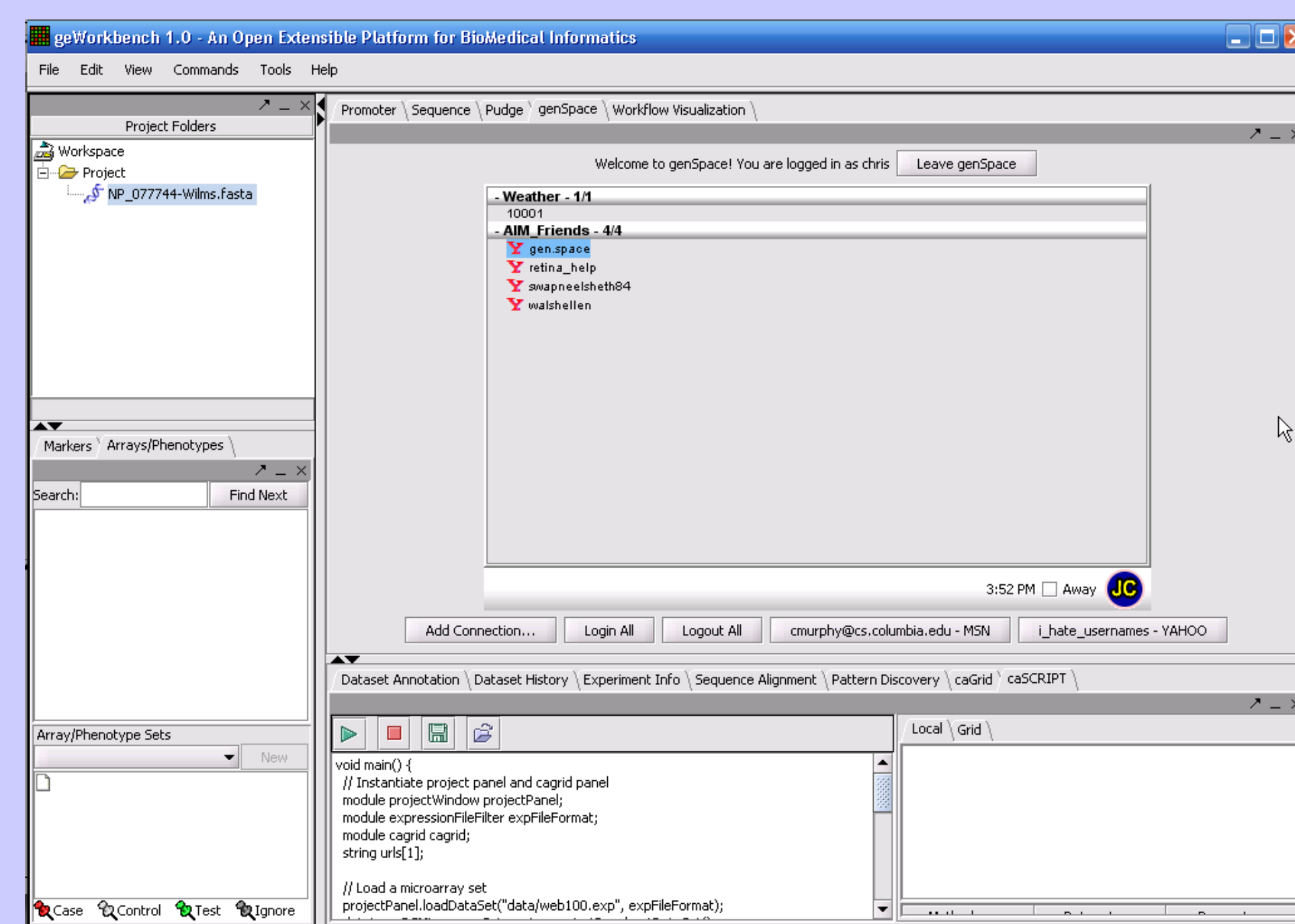
- Prior work on laboratories for computational scientists
  - Tool sharing (e.g. BioCoRE from Univ. of Illinois at U-C)
  - Data sharing (e.g. BSC from Pacific Northwest National Lab)
- We seek to introduce *knowledge sharing*
  - What tools / dataset should I use?
  - Who also uses this tool / dataset?
  - Which tools and datasets work together?
  - Where does this tool / dataset fit in the workflow?
  - When did I previously use this tool / dataset?
  - How can I get help?

- Social Networking facilitates Collaborative Filtering
  - What movies would I like?
  - Who also likes this book?
  - Which food and wine go together?
  - Where does this song fit in the playlist?
  - When was this restaurant last reviewed?
  - How can I get help?
- Investigate Social Networking Models as an approach to Scientific Knowledge Sharing
- Implement prototype for geWorkbench

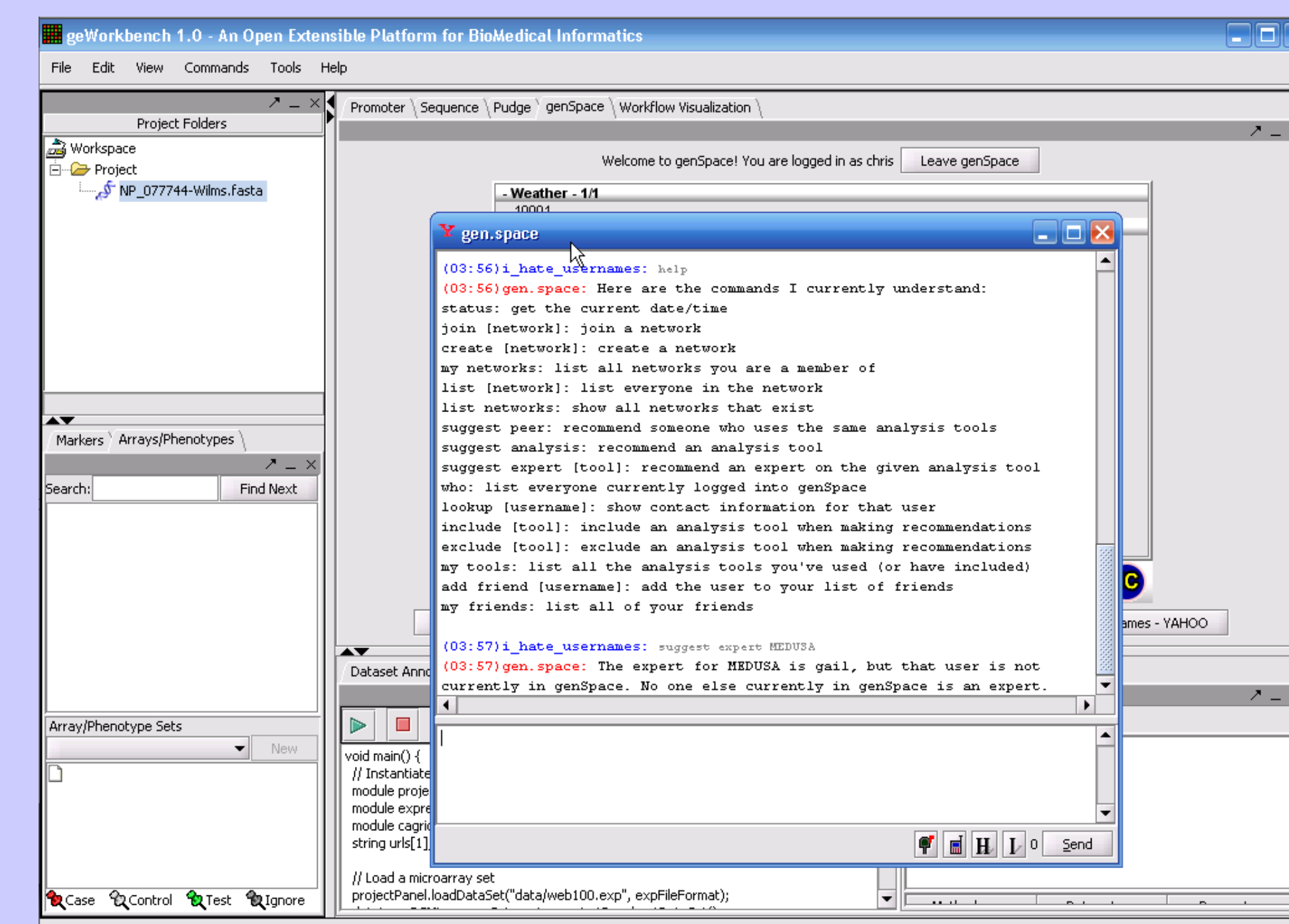
## genSpace: Technical Approach

- genSpace is a geWorkbench plugin
- Instrument geWorkbench to record analysis events
- Aggregate event logs for communities of users
- Automatically construct networks of “similar” users
- Data mine usage patterns
- Query via Instant Messaging (IM) “bots”
- Visualize networks and workflows

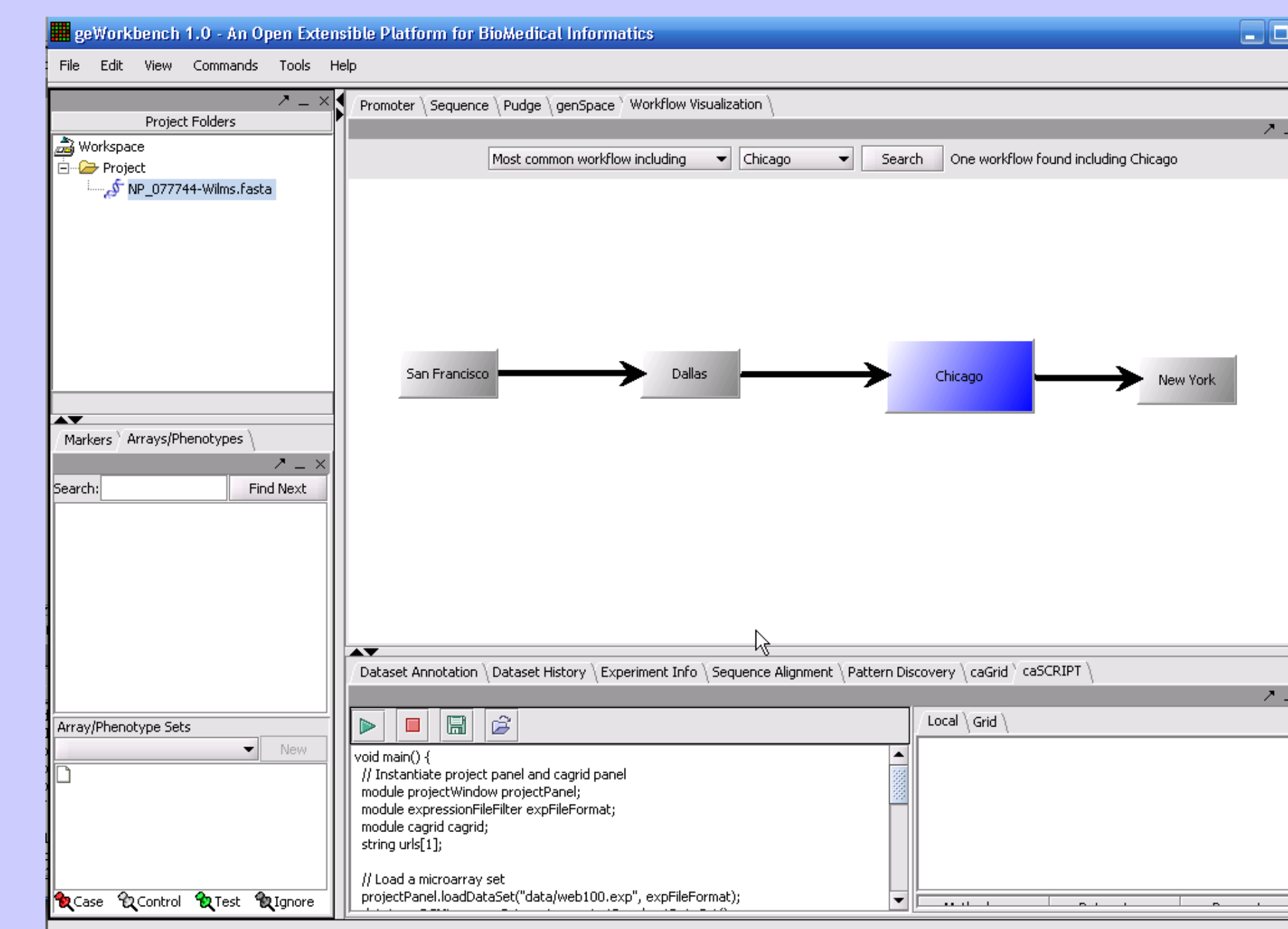
genSpace Plugin



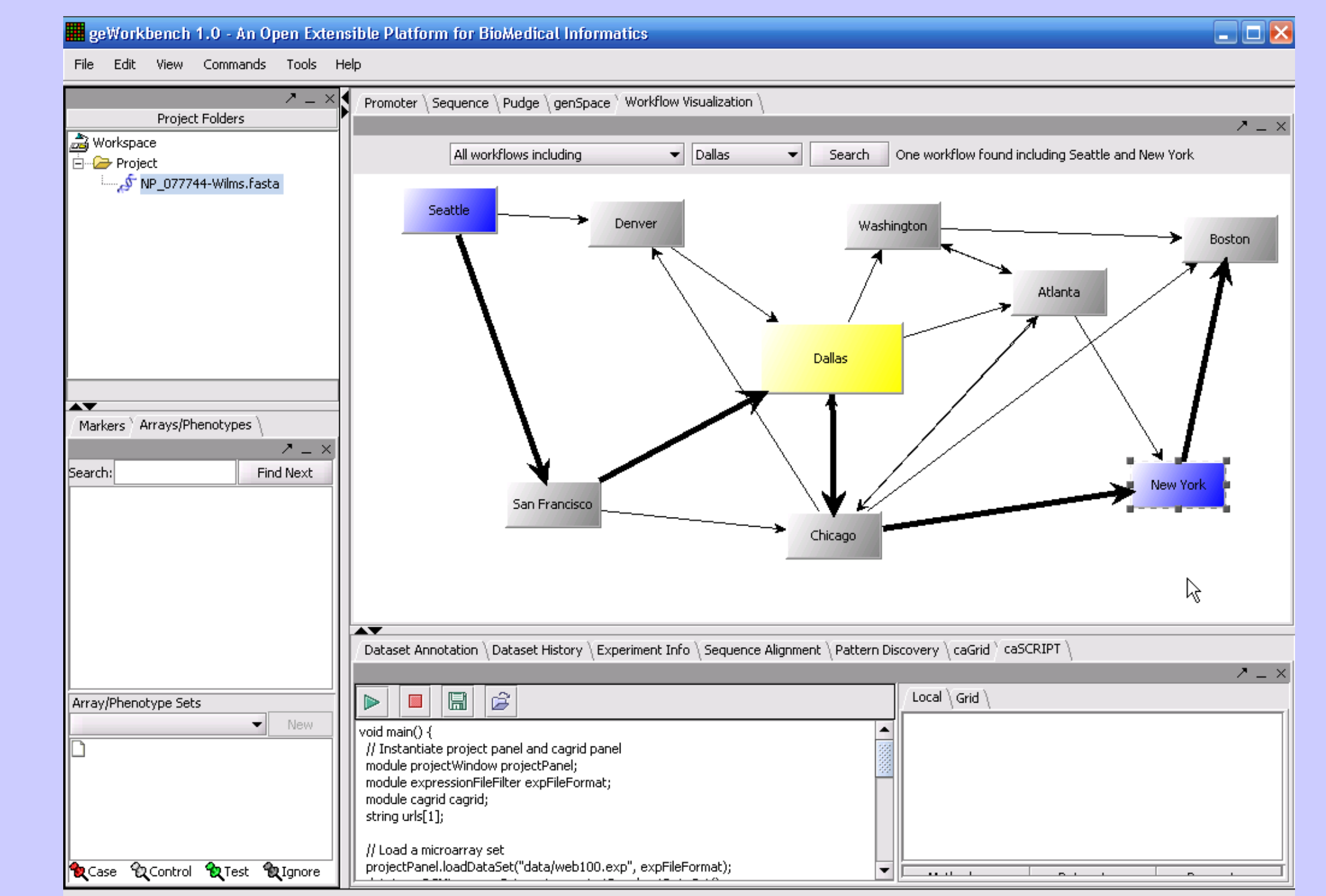
IM based query interface



Single Workflow Visualization



Workflow Relationship Visualization



enable (vt) : to make possible, practical, or easy



PROGRAMMING SYSTEMS LAB  
 COLUMBIA UNIVERSITY

<http://www.psl.cs.columbia.edu/>